



SMART DRIVE SYSTEMS FOR SCREEN SYSTEMS

Practical overview for engineers, project managers
and sales partners in horticulture.



Contents

Together we make screen installations simple	4
Easy does it!	6
'Easy does it' in practice	8
Three drives. Quiet. Powerful. Maintenance-free	10
Horizontal screen systems	17
EWA 50 + MPL 58	18
EWA 52 + MPL 58	20
EWA 56 + MPL 57	22
EWA 56 + MPL 58	24
Vertical screen systems.....	27
RMA 20.05 + WRZ.....	28
RMA 20.12 + WRZ.....	30
EWA 50/52 + WRZ // Twin Roller Screen with Guide	32
EWA 50/52 + WRZ // Twin Roller Screen VariVent BC	34
RMC 50 // Climbing Motor	36
EWA 50 // PowerDrive	39
EWA 50 // PowerDrive // 50 - 150 Nm	40
EWA 52 // PowerDrive	45
EWA 52 // PowerDrive // 250 - 600 Nm	46
EWA 56 // PowerDrive	51
EWA 56 // PowerDrive // 900 - 2000 Nm.....	52
Always support, always nearby.....	56
SBE the smart system for horticulture	57
The 5 promises of Lock.....	58

Together we make screen installations simple

As an engineer, installer or sales partner, you play a key role in creating a stable climate inside the greenhouse. Lock supports you with drive technology that is reliable, simple and precise. For every greenhouse.

In this catalog, you'll find an overview of our screen solutions. No sales talk, but technical insights, practical applications and direct links to files, installation manuals and support.

German engineering quality

For over 180 years, Lock has stood for robust, low-noise and low-maintenance drives. Built to perform in humid, dusty or hot environments, ensuring your screen systems always operate reliably and quietly. Our technology is tested, proven and ready for your next project.

What you can expect from us

- No-nonsense durability
- Easy integration into any design
- Support from a local team you know

Easy does it. For you too.

We make your work easier. Thanks to modular systems, available .DXF and .STEP files, and our two-click installation, designing, installing or selling becomes easier than ever. And your customer will notice that too.

AS A PIONEER IN SCREENING AND VENTILATION, WE CONTINUOUSLY INNOVATE IN EVERY AREA.

FRANK LOCK, CEO



- Support during design phase
- Directly applicable in any greenhouse design
- .DXF and .STEP files available via productfinder.lockdrives.com
- Two-click installation of the limit switch
- Low-noise drives
- Long service life and no oil leakage
- Maintenance-free
- Technical support close by
- Everything in one place: productfinder.lockdrives.com

Easy does it!

This is how you manage screen systems without hassle.

Designing or modifying screen installations in a greenhouse requires smart choices. Technology must not only be correct, but also easy to apply, adjust and maintain.

At Lock, we make this possible with solutions you can integrate directly into your design, install quickly and rely on for years. We call that: Easy does it.



WHAT WE MAKE REALLY EASY:

SUPPORT DURING THE DESIGN PHASE

We provide expert support throughout the planning and implementation phase of your new build or modernization project.

ADJUSTMENT WITHOUT HASSLE

Mechatronic limit switch system, adjustable in two clicks. Plug & Play.

PRODUCTFINDER.LOCKDRIVES.COM

All .DXF and .STEP files clearly arranged and ready for use.

NO POWER REQUIRED FOR INSTALLATION

Mounting the drive and setting the end positions without power can be done in one go – saving time, simple and efficient!

REPLACING A MOTOR = QUICKLY DONE

Our drives can be replaced without modifying the structure.

SUPPORT CLOSE BY

A team that speaks your language. Always available, always practical.

**ALL INFORMATION
CLEARLY ARRANGED
IN ONE PLACE?**

Visit
productfinder.lockdrives.com
for support and downloads.

This is how 'Easy does it' works in practice

Whether you're involved in design, planning or sales: Lock helps you choose solutions that operate easily, last long and require little attention from you and your customer.



WHAT DOES THAT MEAN FOR YOU?

EVERYTHING FITS, WITHOUT HASSLE

Drives, racks, bearings, couplings, mounting hardware and limit switches: Lock supplies a complete system that fits columns, trusses and gable ends. Everything matches.

ANY INSTALLATION POSITION POSSIBLE

Our drives are suitable for any installation orientation. No surprises during installation or replacement.

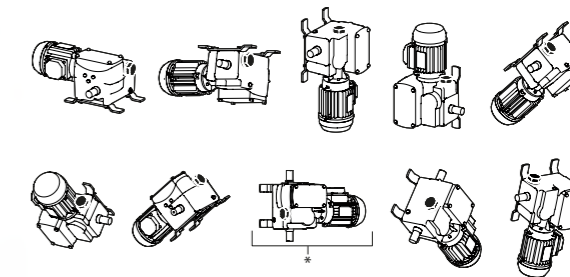
EXTREMELY QUIET AND LOW-MAINTENANCE

For the grower, that means: no noise disturbance, no leakage, barely any maintenance.

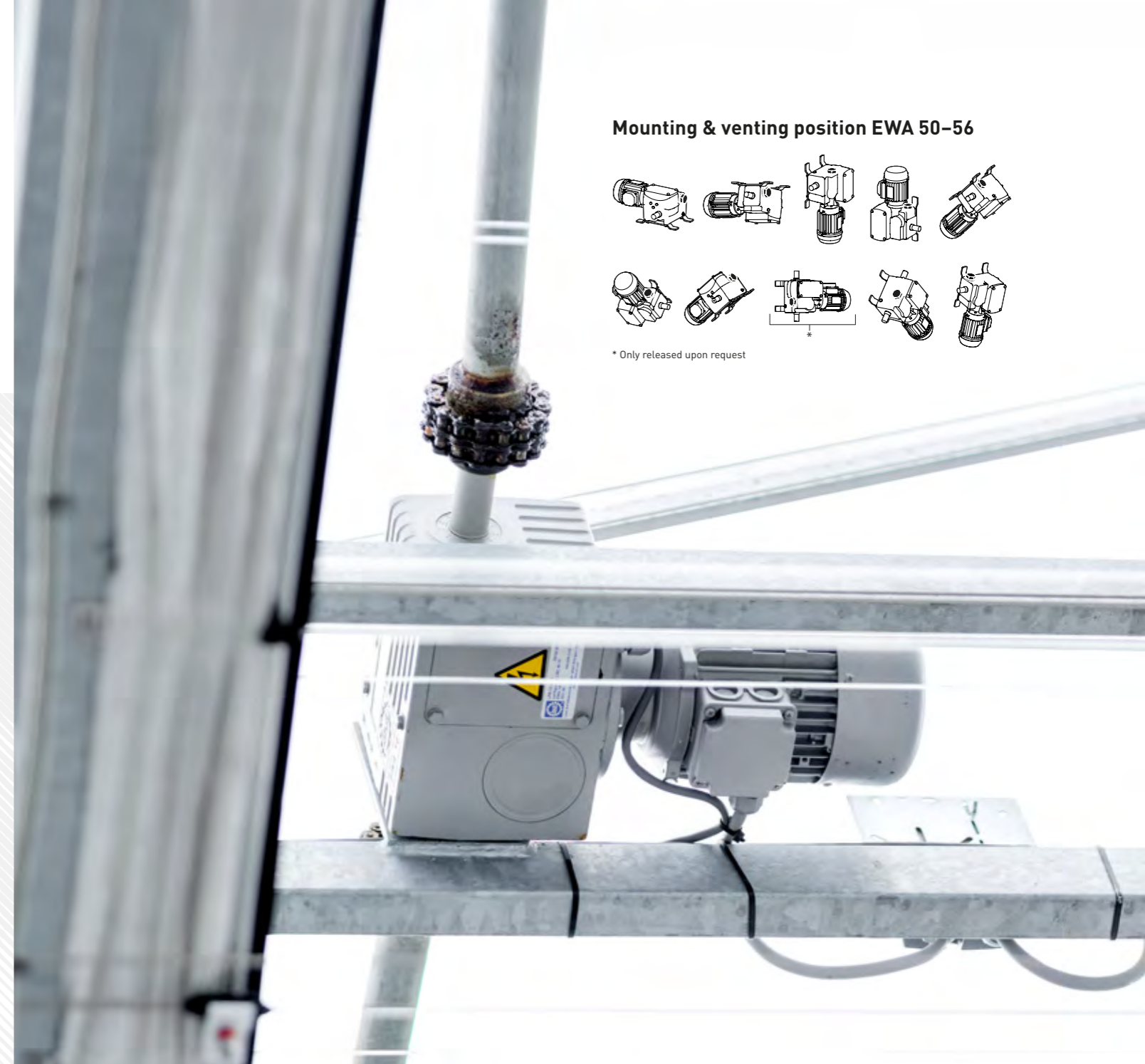
TAILORED SUPPORT FOR YOU AND YOUR CUSTOMER

From first design to commissioning, we're ready to help. Including assessment for renovation.

Mounting & venting position EWA 50-56



* Only released upon request



Three drives. Quiet. Powerful. Maintenance-free.

The EWA 50, 52 and 56 PowerDrives are the global standard in greenhouse horticulture. These self-locking double worm gear units combine power, precision and reliability in every greenhouse. Extremely quiet, completely maintenance-free and suitable for almost any system.

ACCURATE TO THE MILLIMETER

The EWA 5-series is a self-locking system, eliminating damage risks. The drives control vents and screens with great precision, allowing exact parameter tuning.

MAINTENANCE-FREE

Fully sealed worm-gear housing. No oil changes needed, no leakage possible.

EASY INSTALLATION

With the two-click installation of the limit switch, the end positions are quickly set and ready for use. No more waiting 1.5 hours - start working immediately with full power.

WORLDWIDE APPLICABILITY

For every greenhouse we offer an ideal drive system. The EWA 5-series provides everything a greenhouse needs, for both single-phase AC and three-phase AC. So you always have the best drive for each project.

IP55-PROTECTED

All drives in the EWA 5-series are resistant to moisture, dust, and condensation, so corrosion is a thing of the past. And to reinforce that, we offer no less than a 10-year warranty on our solutions.



For more information about Lock PowerDrives, visit:
productfinder.lockdrives.com



The EWA 5-series:
**Fully interchangeable,
always a perfect fit.**



EWA 50
50-150 Nm
1~ or 3~



EWA 52
250-600 Nm
1~ or 3~



EWA 56
900-2000 Nm
20% lighter than comparable products.

CHOOSE THE RIGHT DRIVE AT A GLANCE

- The EWA 5-series is **fully modular** and usable in any greenhouse.
- Thanks to Lock's wide range of types, versions and accessories combined with EWA 5-series, you can easily assemble the ideal solution.
- Modular systems suited for point, line and surface movements.

PowerDrive	Torque range [Nm]	Application	Voltage 1~	Voltage 3~
EWA 50	50-150	Light screen applications	120 / 230 / 240 V	208 / 400 / 480 V
EWA 52	250-600	All-rounder: screening & ventilation	120 / 230 / 240 V	208 / 400 / 480 V
EWA 56	900-2000	Large-area ventilation & screening		208 / 400 / 480 V



**SELF-LOCKING
AND ACCURATE TO
THE MILLIMETER –
RELIABILITY
GUARANTEED.**

Overview of speeds per EWA drive for screen applications

This table shows the speed (rpm) per EWA drive for a specific voltage and frequency. It allows you to determine instantly which drive best matches your technical specifications, installation situation or country requirements. This helps you choose the correct model for power, speed and voltage.

		EWA 50			EWA 52				EWA 56			
		50 Nm	90 Nm	150 Nm	250 Nm	350 Nm	450 Nm	600 Nm	900 Nm	1200 Nm	1500 Nm	2000 Nm
n [V/min] at 50 Hz	400 V 3~	2,6	2,6	2,6	1,6		1,6		2,4	2,4	2,4	2,4
		4,5	4,5	4,5	3,2	3,2	3,2	3,2	4,9		4,9	
					4,4	4,4	4,4	4,4				
					8,8		8,8					
n [V/min] at 50 Hz	230 V 1~	2,6	2,6	2,6	1,6		1,6					
		4,5	4,5	4,5	3,2	3,2	3,2					
					4,4	4,4	4,4					
					8,8		8,8					
n [V/min] at 50 Hz	380 V 3~	2,6	2,6	2,6								
		4,5	4,5	2,6								
n [V/min] at 60 Hz	120 V 1~		3,2	3,2	2,0							
					3,2							
n [V/min] at 60 Hz	240 V 1~		3,2	3,2	3,8	3,8	3,8					
n [V/min] at 60 Hz	208 V 3~ 480 V 3~	2,9	3,2	3,2	3,8	3,8	3,8	3,8		2,9	2,9	
									2,9	5,8	5,8	

Adjustment in a snap



Thanks to our mechatronic limit switch system, you can set Lock drive systems within seconds. No tools, no power, no stress. Click one: start position. Click two: end position. Done. The settings are retained even after power loss.

BENEFITS FOR ENGINEERS

- Directly applicable in any project
- No installer training required
- Saves 90 minutes per drive
- Fast installation
- No calibration required
- No wear points
- No power required during installation

LSC 40 MECHATRONIC LIMIT SWITCH SYSTEM

- Thanks to the internal switch, the LSC 40 never moves past the end position, preventing major damage.
- One universal version for all speeds
- Integrated auxiliary switches (AC/DC control voltage)
- No mechanical stops or wear
- Immediately ready for operation after a fault, because the LSC remembers the last position. This saves a lot of time and money.
- Signal outputs: 0–10 V, 4–20 mA, or incremental

View datasheets and connection examples at
productfinder.lockdrives.com



**EASY INSTALLATION
IN TWO CLICKS.
EASY DOES IT!**



HORIZONTAL SCREEN SYSTEMS

THE RIGHT DRIVE FOR EVERY SCREEN SYSTEM

A suitable EWA PowerDrive with mounting components is available for every screen system. These combinations ensure reliable, low-noise and efficient power transmission, tailored to the performance requirements of your screen or ventilation system.

The combinations below are used worldwide in horticulture:

EWA 50 + MPL 58

EWA 52 + MPL 58

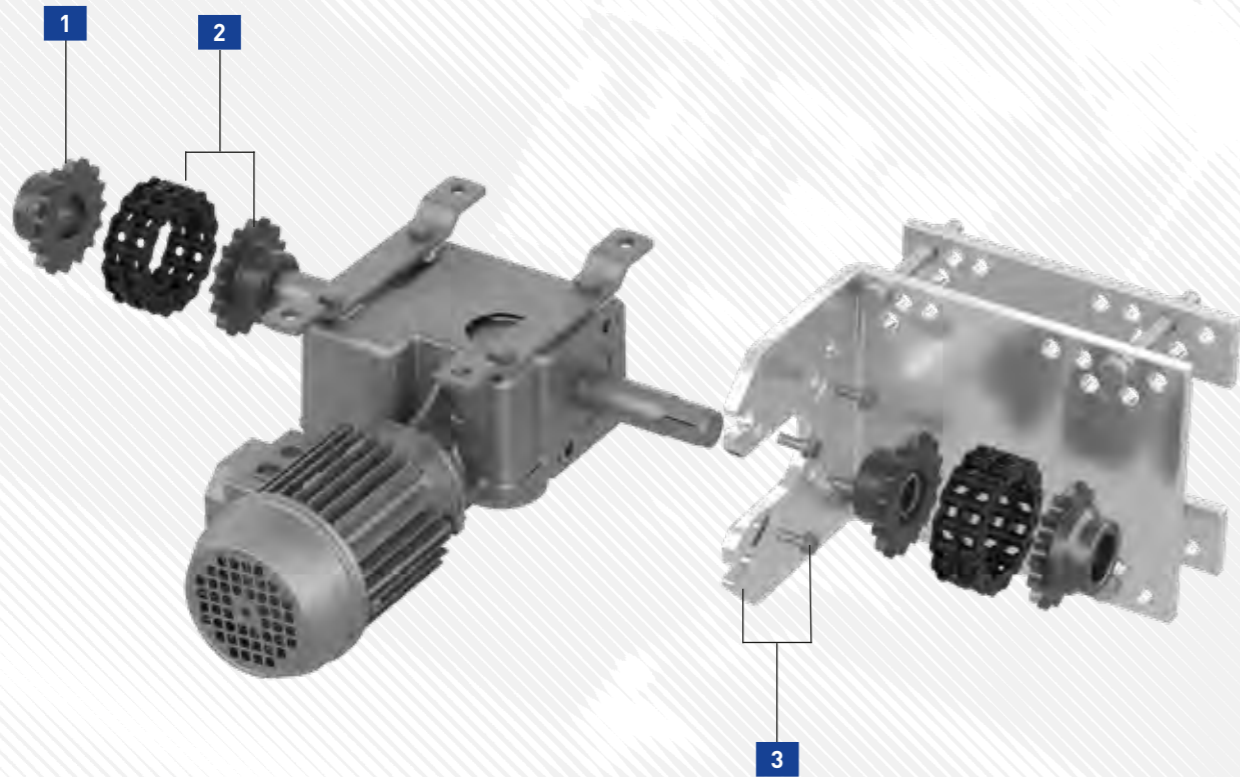
EWA 56 + MPL 57

EWA 56 + MPL 58

Horizontal Screen Systems

EWA 50 + MPL 58

This exploded view shows the structure of the components for a horizontal screen system with EWA 50 and the MPL 58 mounting plate. All individual parts, including item numbers and quantities, are clearly listed in the table. This means you can get started on your project straight away – simply order and assemble.



PARTS OVERVIEW EWA 50 WITH MPL 58 MOUNTING PLATE

All components of this system, including item numbers and quantities, are clearly listed in the table below. Use the exploded view on the previous page as a visual reference.

Horizontal Screen Systems parts overview

EWA 50 with MPL 58

	Article number	Description	Quantity
1	20611.9581.43	KKS 11.8143	2
2	20611.9181.66	KKS 11.8166	2
3	82558.2017.11	MPL 58.2011	1

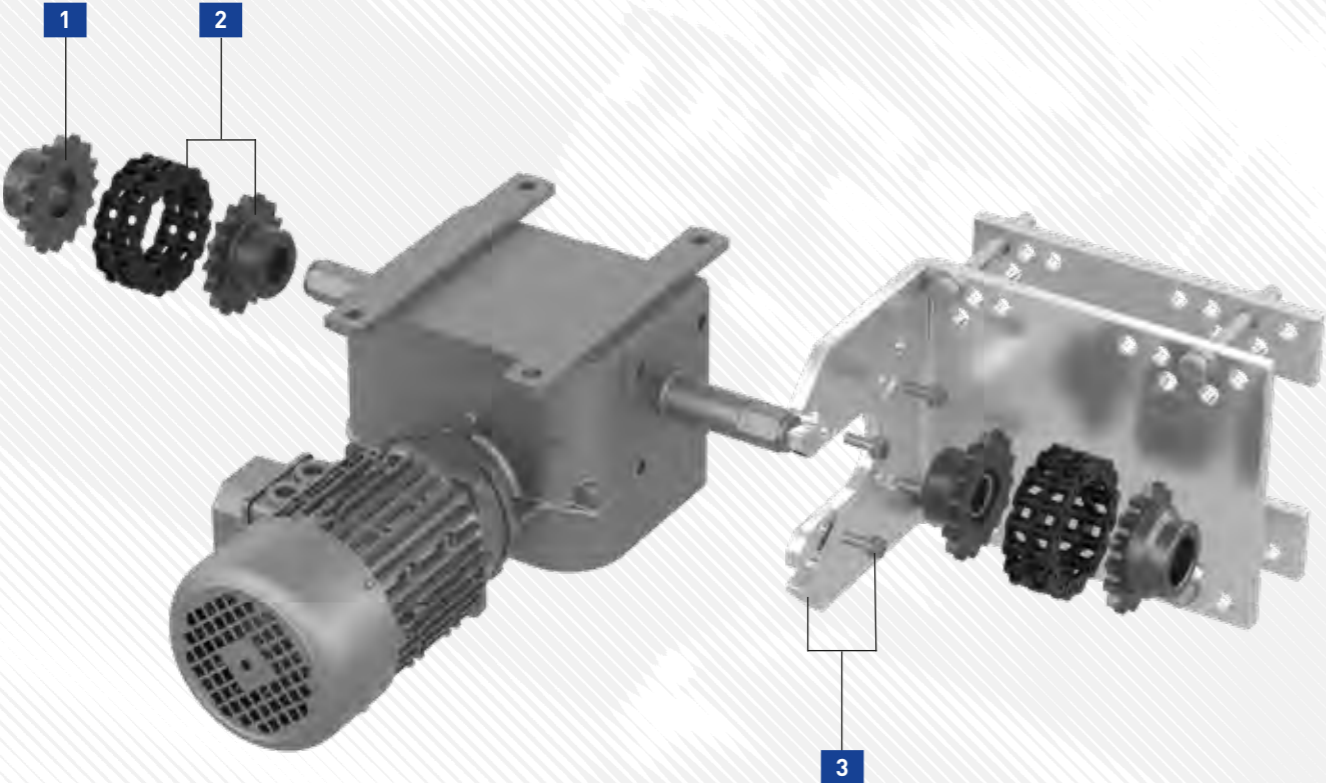
ALL INFORMATION
CLEARLY ARRANGED
IN ONE PLACE?
Visit
productfinder.lockdrives.com
for support and downloads.



Horizontal Screen Systems

EWA 52 + MPL 58

This exploded view shows the structure of the components for a horizontal screen system with EWA 52 and an MPL 58 mounting plate. All individual parts, including item numbers and quantities, are clearly listed in the table. This means you can get started on your project straight away – simply order and assemble.



PARTS OVERVIEW EWA 52 WITH MPL 58 MOUNTING PLATE

All components of this system, including item numbers and quantities, are clearly listed in the table below. Use the exploded view on the previous page as a visual reference.

Horizontal Screen Systems parts overview			
EWA 52 with MPL 58			
	Article number	Description	Quantity
1	20611.9581.43	KKS 11.8143	2
2	20611.9181.66	KKS 11.8166	2
3	82558.2017.11	MPL 58.2011	1

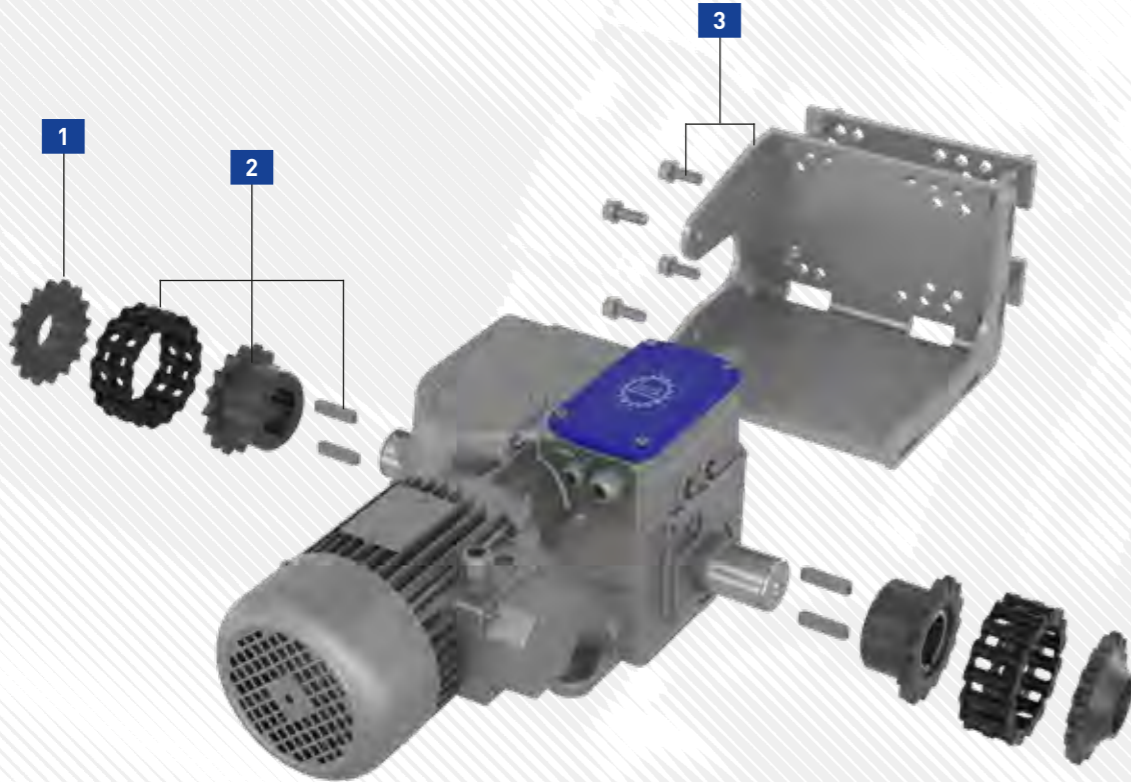
ALL INFORMATION CLEARLY ARRANGED IN ONE PLACE? Visit productfinder.lockdrives.com for support and downloads.



Horizontal Screen Systems

EWA 56 + MPL 57

This exploded view shows the structure of the components for a horizontal screen system with EWA 56 and the MPL 57 mounting plate. All individual parts, including item numbers and quantities, are clearly listed in the table. This means you can get started on your project straight away – simply order and assemble.



PARTS OVERVIEW EWA 56 WITH MPL 57 MOUNTING PLATE

All components of this system, including item numbers and quantities, are clearly listed in the table below. Use the exploded view on the previous page as a visual reference

Horizontal Screen Systems parts overview			
EWA 56 with MPL 57			
	Article number	Description	Quantity
1	20610.9591.43	KKS 10.9143	2
2	20610.9191.19	KKS 10.9119	2
3	82557.1824.1101	MPL 57.1824	1

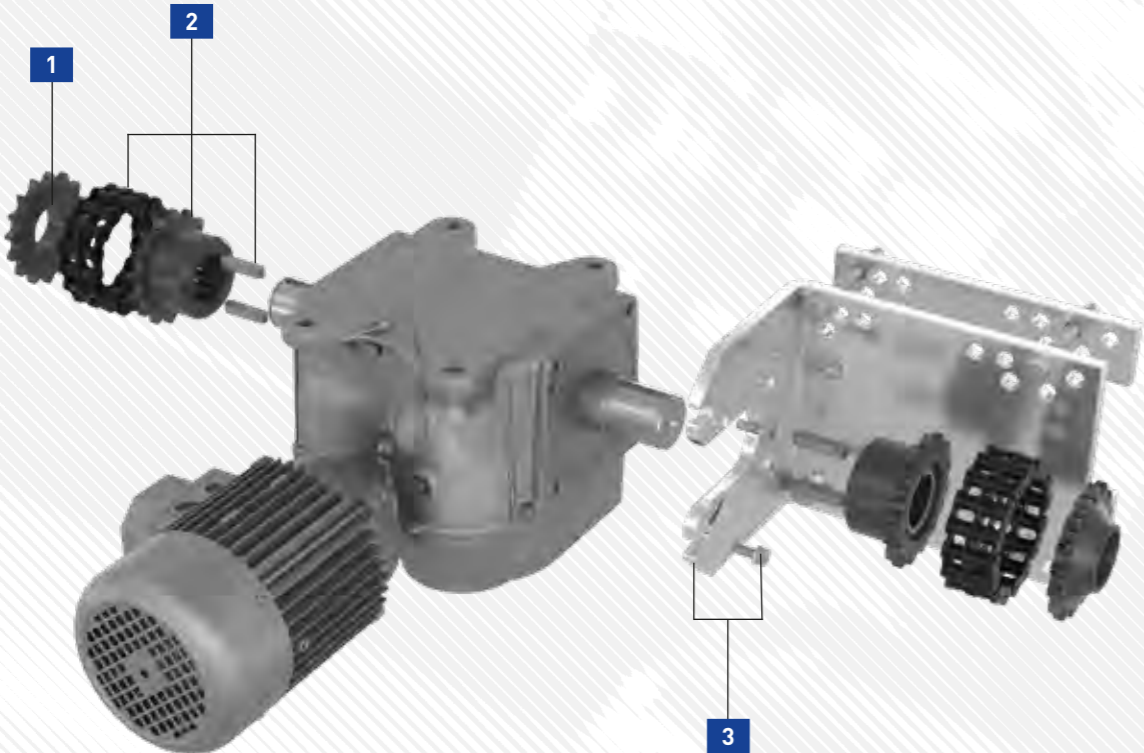
ALL INFORMATION CLEARLY ARRANGED IN ONE PLACE? Visit productfinder.lockdrives.com for support and downloads.



Horizontal Screen Systems

EWA 56 + MPL 58

This exploded view shows the structure of the components for a horizontal screen system with EWA 56 and the MPL 58 mounting plate. All individual parts, including item numbers and quantities, are clearly listed in the table. This means you can get started on your project straight away – simply order and assemble.

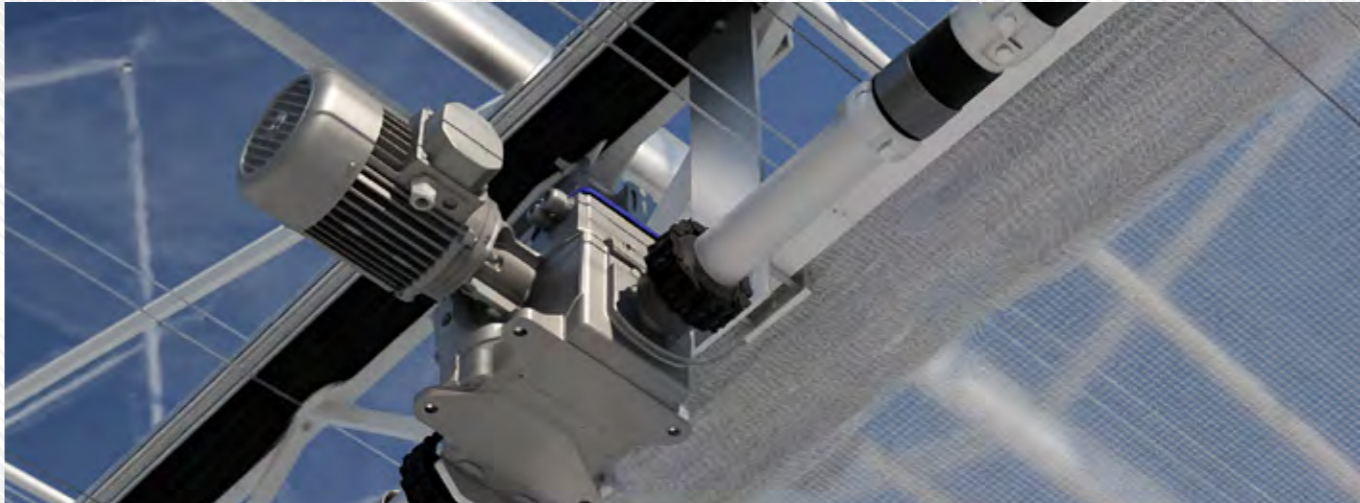


PARTS OVERVIEW EWA 56 WITH MPL 58 MOUNTING PLATE

All components of this system, including item numbers and quantities, are clearly listed in the table below. Use the exploded view on the previous page as a visual reference.

Horizontal Screen Systems parts overview			
EWA 56 with MPL 58			
	Article number	Description	Quantity
1	20610.9591.43	KKS 10.9143	2
2	20610.9191.19	KKS 10.9119	2
3	82558.2017.11	MPL 58.2011	1

ALL INFORMATION CLEARLY ARRANGED IN ONE PLACE? Visit productfinder.lockdrives.com for support and downloads.





VERTICAL SCREEN SYSTEMS

MAXIMUM CONTROL, MINIMUM SPACE

Vertical screens are used to divide compartments or to regulate climate and light in specific zones. Because vertical screens often offer limited installation space, compact smart solutions are required. Lock provides several systems suitable for various greenhouse structures, with reliable drives and precise guides. All parts are coordinated and easy to integrate.

RMA 20.05 + WRZ

RMA 20.12 + WRZ

EWA 50/52 + WRZ // TWIN ROLLER SCREEN WITH GUIDE

EWA 50/52 + WRZ // TWIN ROLLER SCREEN VARIVENT BC

RMC 50 // CLIMBING MOTOR



**OUR EWA DRIVES CAN BE
INSTALLED IN ANY POSITION.
USE THAT FREEDOM TO
ACHIEVE THE OPTIMAL
DRIVE SETUP.**

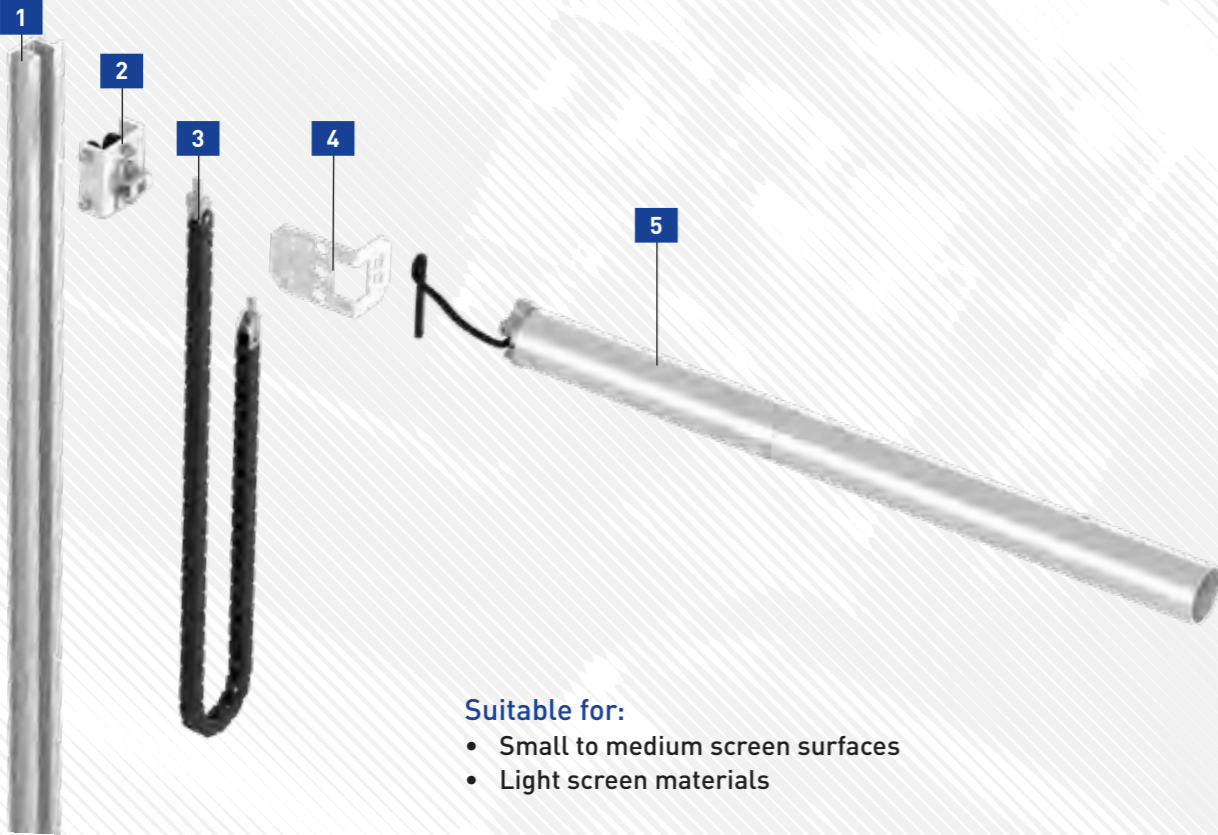
TOBIAS FLUHR, PRODUCT MANAGER

Vertical Screen Systems

RMA 20.05 + WRZ

50 Nm

Compact drive for vertical screens in small zones where limited pulling force is needed. Ideal for minimal space or low fabric loads. All individual parts, including item numbers and quantities, are clearly listed in the table. This means you can get started on your project straight away – simply order and assemble.



- Suitable for:**
- Small to medium screen surfaces
 - Light screen materials

PARTS OVERVIEW OF A VERTICAL SCREEN WITH THE RMA 20.05 TUBE MOTOR

All components of this tube motor system, including item numbers and quantities, are clearly listed in the table below. Use the exploded view on the previous page as a visual reference.

Vertical Screen Tube motor parts overview			
RMA 20.05 Tube motor			
	Article number	Description	Quantity
1	81801.01xx*	WRZ 01.01xx	1
2	81810.0111	WRZ 10.0111	1
3	81820.5011	WRZ 20.5011	1
	81820.9102	WRZ 20.9102	1
4	81820.9111	WRZ 20.9111	1
	81820.0111	WRZ 20.0111	1
5	17220.0512.5001	RMA 20.0512	1

ALL INFORMATION CLEARLY ARRANGED IN ONE PLACE?
Visit productfinder.lockdrives.com for support and downloads.

* Position indicators for length, not to be inserted in advance.

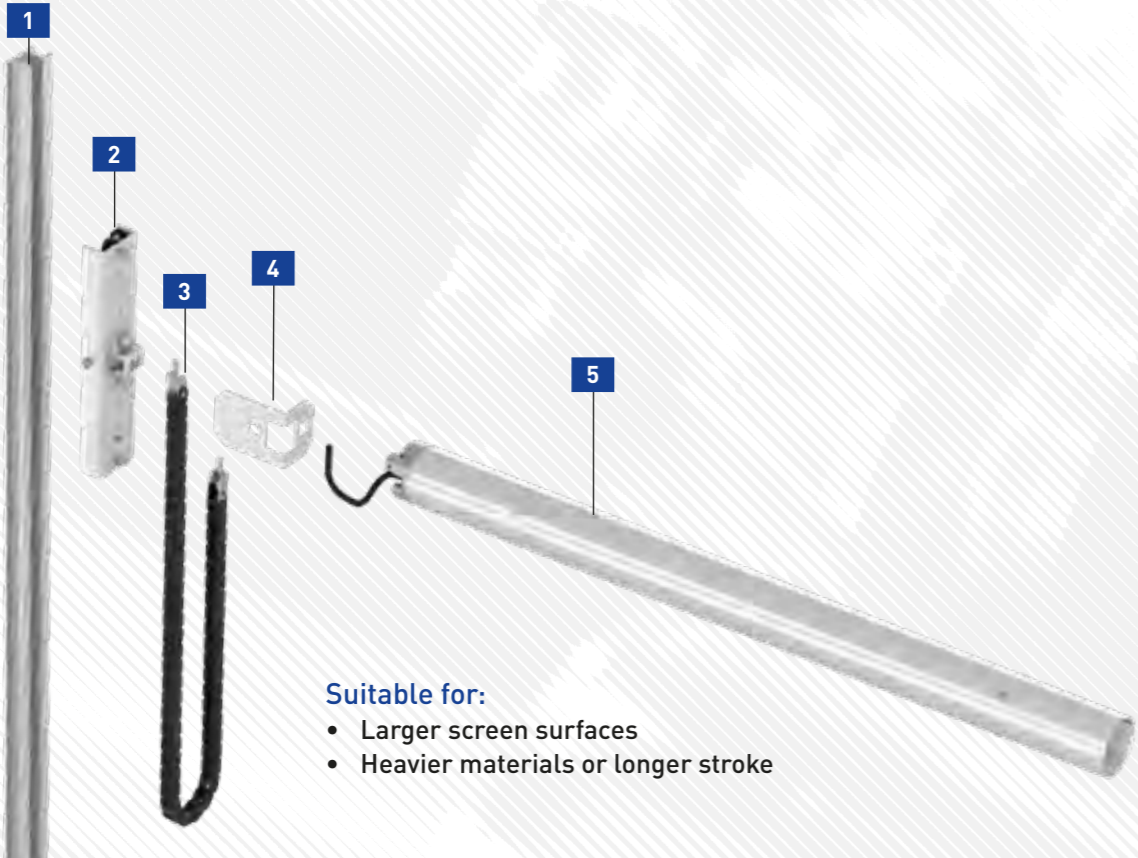


Vertical Screen Systems

RMA 20.12 + WRZ

120 Nm

This variant offers more pulling power and stability for larger vertical screens. Suitable for use in larger departments or when heavier fabrics are used. All individual parts, including item numbers and quantities, are clearly listed in the table. This means you can get started on your project straight away – simply order and assemble.



- Suitable for:**
- Larger screen surfaces
 - Heavier materials or longer stroke

PARTS OVERVIEW OF A VERTICAL SCREEN WITH THE RMA 20.12 TUBE MOTOR

All components of this tube motor system, including item numbers and quantities, are clearly listed in the table below. Use the exploded view on the previous page as a visual reference.

Vertical Screen Tube motor parts overview			
RMA 20.12 Tube motor			
	Article number	Description	Quantity
1	81801.01xx*	WRZ 01.01xx	1
2	81810.0122	WRZ 10.0122	1
3	81820.5011	WRZ 20.5011	1
	81820.9102	WRZ 20.9102	1
4	81820.9111	WRZ 20.9111	1
	81820.0112	WRZ 20.0112	1
5	17220.1212.6305	RMA 20.12	1

ALL INFORMATION CLEARLY ARRANGED IN ONE PLACE?
 Visit productfinder.lockdrives.com for support and downloads.

* Position indicators for length, not to be inserted in advance.

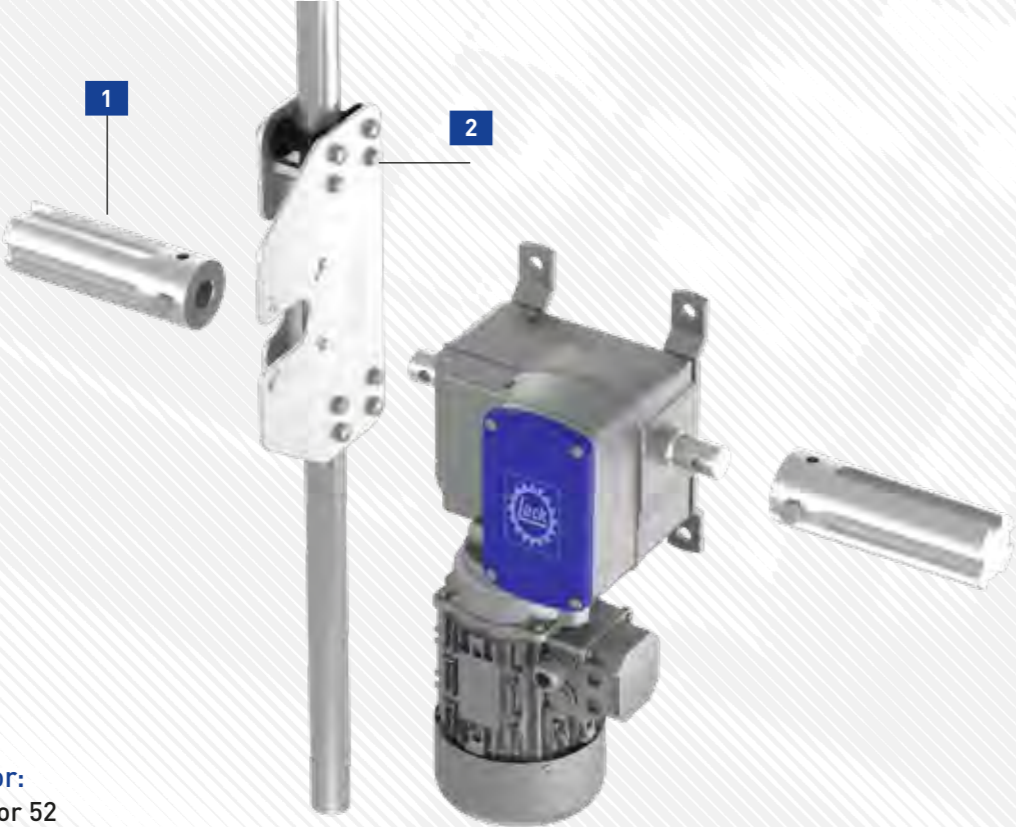


Vertical Screen Systems

EWA 50/52 + WRZ

TWIN ROLLER SCREEN WITH GUIDE

A classic and stable system for dividing compartments. The guide keeps the fabric tight and prevents flapping from pressure differences or drafts. All individual parts, including item numbers and quantities, are clearly listed in the table. This means you can get started on your project straight away – simply order and assemble.



- Suitable for:**
- EWA 50 or 52
 - For use in compartments with greater ventilation height and length.

PARTS OVERVIEW OF A TWIN ROLLER SCREEN WITH GUIDE WITH THE EWA 50 OR EWA 52

All components of this vertical screen system, including item numbers and quantities, are clearly listed in the table below. Use the exploded view on the previous page as a visual reference.

Twin Roller Screen with guide parts overview			
EWA 50 or EWA 52			
	Article number	Description	Quantity
1	20998.6003.26	WRA 60.0326	1
2	81815.0120.0001	WRZ 15	2

ALL INFORMATION CLEARLY ARRANGED IN ONE PLACE?
 Visit productfinder.lockdrives.com for support and downloads.

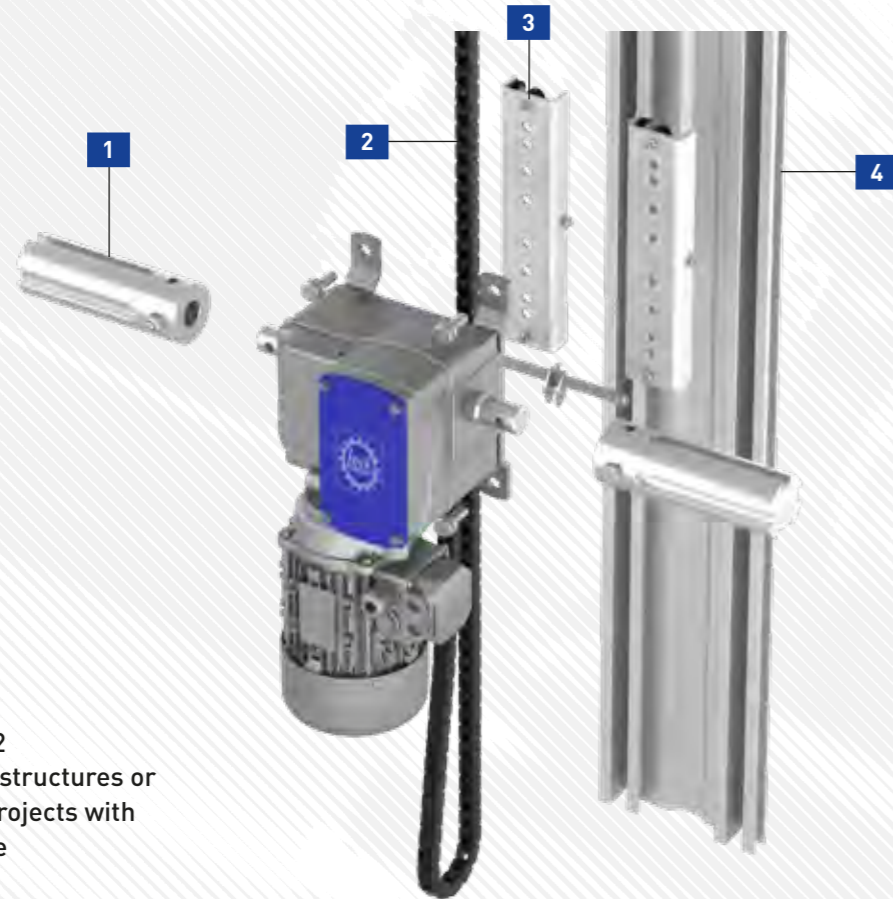


Vertical Screen Systems

EWA 50/52 + WRZ

TWIN ROLLER SCREEN VARIVENT BC

This variant has been specially developed for greenhouses with a VariVent construction. The system follows the structure of the greenhouse and can be assembled quickly and compactly, without compromising on reliability. All individual parts, including item numbers and quantities, are clearly listed in the table. This means you can get started on your project straight away – simply order and assemble.



Suitable for:

- EWA 50 or 52
- Greenhouse structures or renovation projects with limited space

PARTS OVERVIEW OF A VARIVENT BC TWIN ROLLER SCREEN WITH THE EWA 50 OR EWA 52

All components of this vertical screen system, including item numbers and quantities, are clearly listed in the table below. Use the exploded view on the previous page as a visual reference.

VariVent BC twin roller screen parts overview		
EWA 50 or EWA 52		
	Article number	Description
1	20998.6003.26	WRA 60.0326
2	81820.5011	WRZ 20.5011
	81820.9102	WRZ 20.9102
3	81820.9111	WRZ 10.0120
	81810.0120	WRZ 20.0111
4	81801.02xx*	WRZ 02 with 1 m, 2 m, 3 m, 4 m, 5 m, 6 m length

ALL INFORMATION
CLEARLY ARRANGED
IN ONE PLACE?
Visit
productfinder.lockdrives.com
for support and downloads.

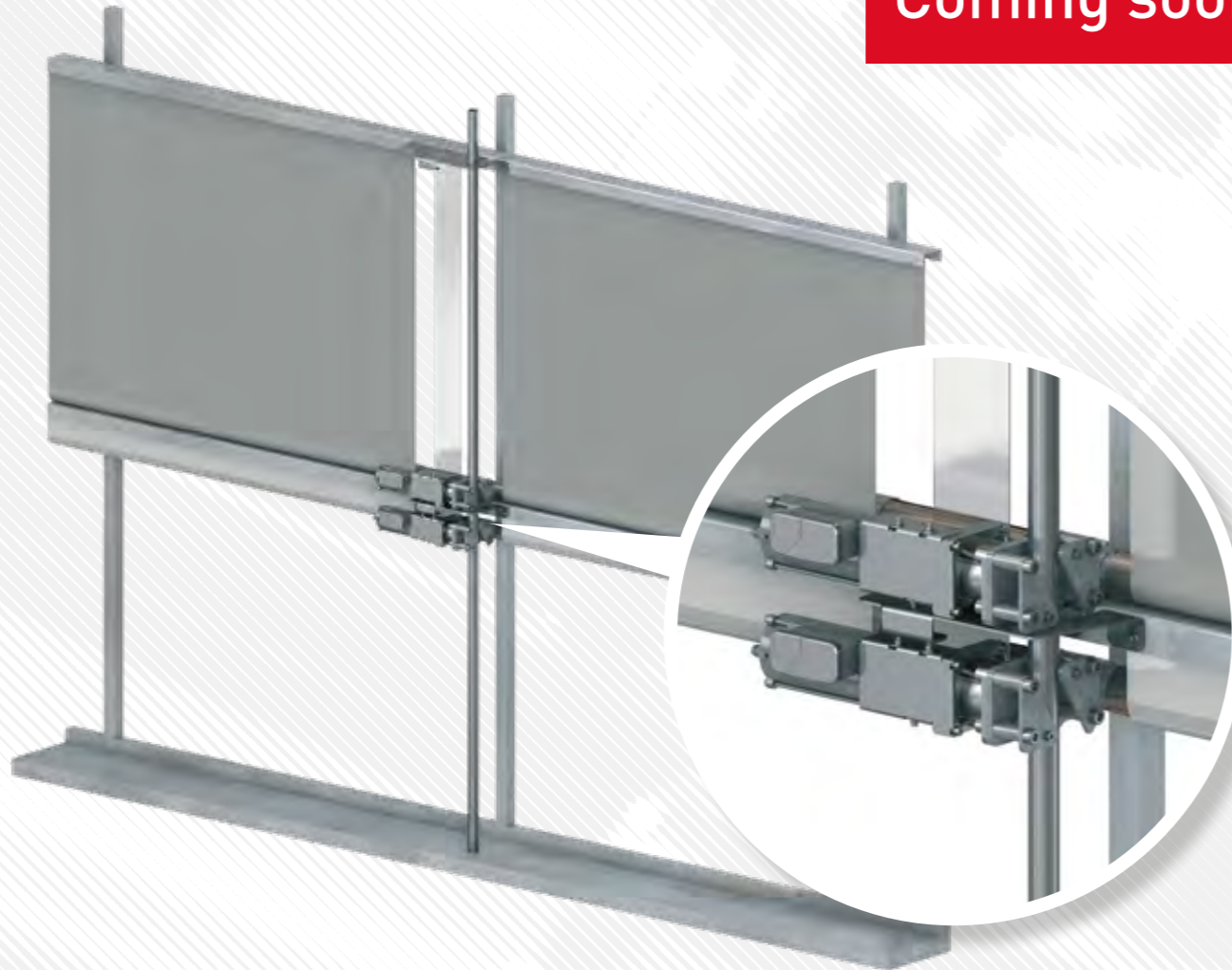
* Position markings for length, not to be inserted in advance.



Vertical Screen Systems

RMC 50 // Climbing Motor

Coming soon



FOR OPTIMAL GABLE SCREENING

Lock's team of engineers is constantly looking for new improvements in existing drive technologies. Their aim is to make operating greenhouse screens as easy as possible, whether they are horizontal, vertical, or hanging screen systems. And with the arrival of the RMC 50, we now also have the perfect solution for façade screens.

The RMC 50 was developed in-house and offers many advantages.

The RMC 50 is very compact in size and 30% lighter in weight. Installation is very easy. Furthermore, setting end positions is no longer necessary. This saves a considerable amount of time during assembly, allowing the motor to be put into use more quickly.

AVAILABLE FROM: END 2026

DEMO OR INTRODUCTION ON REQUEST

Please contact us for more information.

+49 7371 9508-0 // engineering@lockdrives.com



EWA 50 // PowerDrive



EWA 50 // PowerDrive

50 - 150 Nm



Version	T [Nm]	n [1/min]	I [A]	P [kW]	m We 06 [kg]	m We 66 [kg]
400 V 3~, 50 Hz						
EWA 50.0503	50	2,6	0,4	0,19	18,4	19,1
EWA 50.0505	50	4,5	0,45	0,22	18,4	19,1
EWA 50.0903	90	2,6	0,45	0,23	18,4	19,1
EWA 50.0905	90	4,5	0,9	0,33	18,4	19,1
EWA 50.1503	150	2,6	0,8	0,39	18,4	19,1
EWA 50.1505	150	4,5	0,94	0,46	18,4	19,1
230 V 1~, 50 Hz						
EWA 50.0503	50	2,6	1,4	0,3	18,6	19,3
EWA 50.0505	50	4,5	1,5	0,32	18,6	19,3
EWA 50.0903	90	2,6	1,5	0,32	18,6	19,3
EWA 50.0905	90	4,5	1,7	0,38	19,4	20,1
EWA 50.1503	150	2,6	1,7	0,34	19,4	20,1
EWA 50.1505	150	4,5	2,8	0,62	19,5	20,2
380 V 3~, 50 Hz, CCC						
EWA 50.0503	50	2,6	0,6	0,24	19,3	-
EWA 50.0505	50	4,5	0,6	0,25	19,3	-
EWA 50.0903	90	2,6	0,6	0,26	19,3	-
EWA 50.0905	90	4,5	0,8	0,38	19,8	-
EWA 50.1503	150	2,6	0,8	0,38	19,8	-
EWA 50.1505	150	4,5	0,9	0,46	19,8	-

Version	T [Nm]	T [in.-lb]	n [1/min]	I [A]	P [kW]	m We 06 [kg]
120 V 1~, 60 Hz, cURus Motor						
EWA 50.0903	90	800	3,2	3,00	0,35	20,2
EWA 50.1503	150	1300	3,2	3,60	0,43	20,4
240 V 1~, 60 Hz, cURus Motor						
EWA 50.0903	90	800	3,2	1,60	0,37	18,8
EWA 50.1503	150	1300	3,2	2,00	0,46	20,2
208 V 3~, 60 Hz, cURus Motor						
EWA 50.0903	90	800	3,2	1,00	0,27	18,8
EWA 50.1503	150	1300	3,2	1,20	0,33	18,8
480 V 3~, 60 Hz, cURus Motor						
EWA 50.0903	90	800	3,2	0,50	0,27	18,2
EWA 50.1503	150	1300	3,2	0,70	0,34	18,8



WE SUPPLY COMPLETE DRIVE SYSTEMS THAT MEET A WIDE RANGE OF REQUIREMENTS. WE CAN EVEN CUSTOM-BEND RACK RAILS SO THAT THEY DO NOT INTERFERE WHEN VENTILATION WINDOWS ARE CLOSED.

HOLGER HEITELE, DEVELOPMENT



EWA 52 // PowerDrive



EWA 52 // PowerDrive

250 - 600 Nm

The EWA 52 is an extremely quiet, self-locking double worm gear unit with integrated end position switch-off, designed for maximum service life and completely maintenance-free.



EWA 52 pre-wired

Universal mounting

- Rear or side mounting (symmetrical)
- Standard foot: 70 mm center distance (optional 60 mm)

Integrated limit switch

- Operated via LSC 40 (AC/DC)

Modular & flexible

- Fully interchangeable with older EWA 14
- Works with multiple voltages
- Single-phase models come pre-wired with cable and winding protection

Designed for greenhouse climates

- Ambient temperature -5°C to +60°C
- Optional A60 version for low temperature applications below -5°C
- Protection class IP55

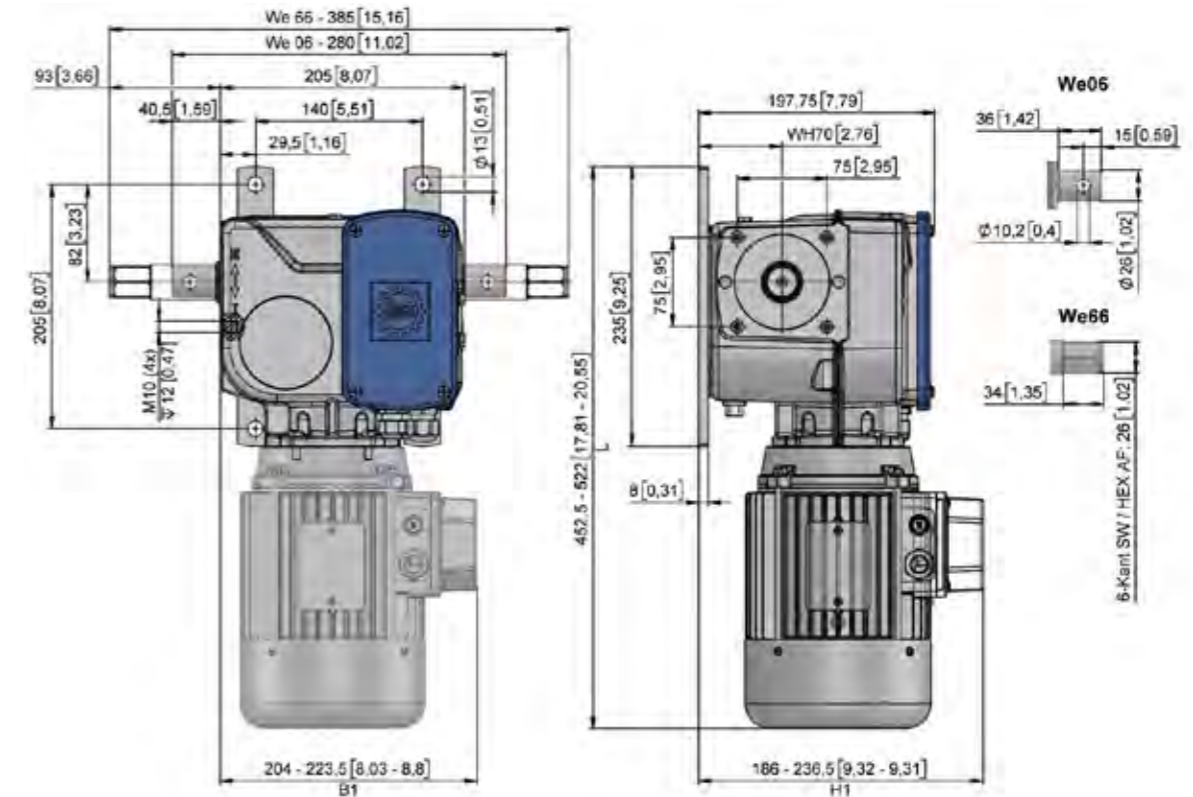
Duty cycle

- S3-40%
- Completely maintenance-free: no oil changes required, no leakage

Position feedback (optional)

When using the LSC 40:

- LPR 02 (analogue 0-10 V / 4-20 mA)
- LPR 04 (digital - incremental signal)



mm [inch]

Want all the information clearly laid out in one place?
Go to productfinder.lockdrives.com for support and downloads.

EWA 52 // PowerDrive

250 - 600 Nm



Version	T [Nm]	n [1/min]	I [A]	P [kW]	m We 06 [kg]	m We 66 [kg]
400 V, 3~, 50 Hz						
EWA 52.1509	150	8,8	1,30	0,70	27	27,7
EWA 52.2501	250	1,6	1,00	0,43	27,7	28,4
EWA 52.2503	250	3,2	1,10	0,47	27,7	28,4
EWA 52.2505	250	4,4	1,20	0,52	27,7	28,4
EWA 52.2509	250	8,8	2,20	1,14	28,3	29
EWA 52.3503	350	3,2	1,50	0,86	27,7	28,4
EWA 52.3505	350	4,4	1,60	0,92	27,7	28,4
EWA 52.4501	450	1,6	1,10	0,47	27,7	28,4
EWA 52.4503	450	3,2	1,65	0,95	27,7	28,4
EWA 52.4505	450	4,4	1,80	1,04	27,7	28,4
EWA 52.4509	450	8,8	2,75	1,42	-	29
EWA 52.6003	600	3,2	1,80	1,04	-	28,4
EWA 52.6005	600	4,4	2,20	1,27	-	28,4
230 V, 1~, 50 Hz						
EWA 52.2501	250	1,6	2,90	0,64	28	28,7
EWA 52.2503	250	3,2	3,20	0,71	28	28,7
EWA 52.2505	250	4,4	3,50	0,77	28	28,7
EWA 52.3503	350	3,2	4,70	0,96	28,8	29,5
EWA 52.3505	350	4,4	5,00	1,02	28,8	29,5
EWA 52.4501	450	1,6	3,20	0,71	28,8	29,5
EWA 52.4503	450	3,2	4,90	1,00	28,8	29,5



Version	T [Nm]	T [in.-lb]	n [1/min]	I [A]	P [kW]	m We 06 [kg]	m We 66 [kg]
120 V, 1~60 Hz, cURus Motor							
EWA 52.2501	250	2200	2,0	3,6	0,75	28,6	-
EWA 52.2503	250	2200	3,8	6,9	0,81	28,6	-
240 V, 1~ 60 Hz, cURus Motor							
EWA 52.2501	250	2200	2,0	3,40	0,78	28,8	-
EWA 52.2503	250	2200	3,8	3,80	0,87	28,8	-
EWA 52.4503	450	4000	3,8	4,85	0,89	28,8	29,5
208 V, 3~ 60 Hz, cURus Motor							
EWA 52.2501	250	2200	2,0	1,75	0,56	27,2	-
EWA 52.2503	250	2200	3,8	2,10	0,67	27,2	-
EWA 52.4503	450	4000	3,8	2,85	0,90	27,2	27,9
EWA 52.6003	600	5300	3,8	3,70	1,09	-	29,2
480 V, 3~ 60 Hz, cURus Motor							
EWA 52.2503	250	2200	3,8	1,45	0,78	27,2	-
EWA 52.4503	450	4000	3,8	1,60	0,86	27,2	27,9
EWA 52.6003	600	5300	3,8	2,30	1,49	-	29,2

**WHETHER IT'S LETTING SUNLIGHT
IN OR CLOSING A SCREEN: LOCK
PROVIDES THE RIGHT CLIMATE
FOR THESE BEAUTIFUL
CHRYSANTHEMUMS.**

THOMAS VAN WINGERDEN



EWA 56 // PowerDrive



EWA 56 // PowerDrive

900 - 2000 Nm

The EWA 56 is an extremely quiet, self-locking double worm gear unit with integrated end position switch-off, designed for maximum service life and completely maintenance-free.



Universal mounting

- Universal mounting with standard rear or side mounting (symmetrical)
- 20% lighter than comparable products
- Flexible coupling selection thanks to standard shaft We19
- Ideally mount the drive in the middle of the drive train (observe max. torque of the couplings)

Integrated limit switch

- End position switch-off via LSC 40 AC or DC control unit incl. additional limit switch

Modular & flexible

- Installation compatible with EWA 16
- Quality motors available for many voltages

Designed for the greenhouse climate

- Ambient temperature -5 °C to +60 °C
- Protection class IP55

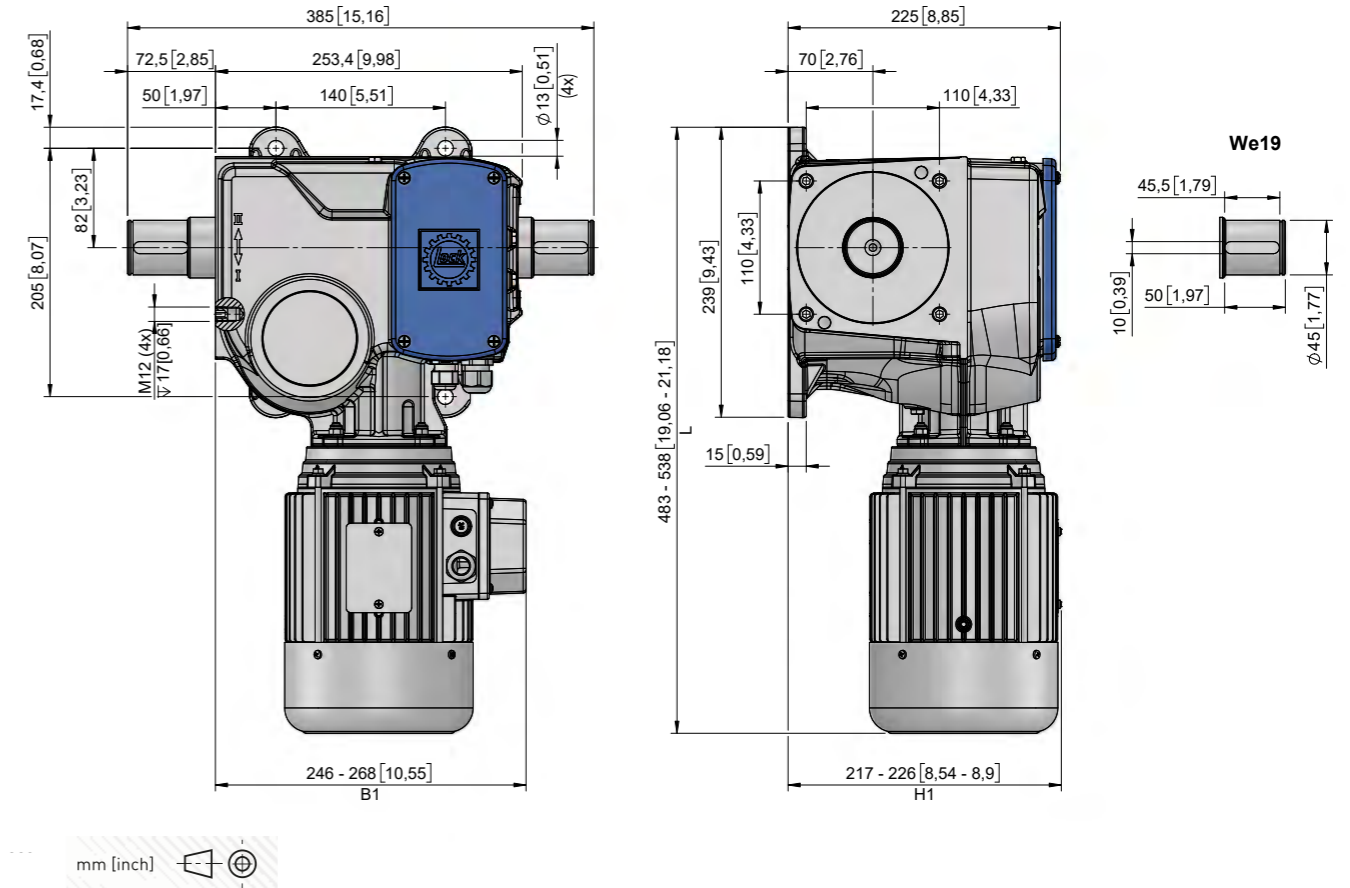
Duty cycle

- S3-40 %
- Completely maintenance-free: no oil change required, no leaks

Position feedback (optional)

When using the LSC 40:

- LPR 02 (analog 0-10 V / 4-20 mA)
- LPR 04 (additionally digital – incremental signal)



Want all the information clearly laid out in one place?
Go to productfinder.lockdrives.com for support and downloads.

EWA 56 // PowerDrive

900 - 2000 Nm



Version	T [Nm]	n [1/min]	I [A]	P [kW]	m [kg]
400 V 3~, 50 Hz cURus Motor					
EWA 56.9003	900	2,4	2,00	1,05	43,3
EWA 56.9005	900	4,9	3,10	1,87	43,8
EWA 56.9203	1200	2,4	2,80	1,40	46,6
EWA 56.9503	1500	2,4	3,30	1,71	46,6
EWA 56.9505	1500	4,9	5,20	2,70	48,4
EWA 56.9703*	2000	2,4	3,50	2,11	49,8

* The use of EWA 56.9703 up to 2000 Nm is only permitted for shading purposes!

Version	T [Nm]	T [in.-lb]	n [1/min]	I [A]	P [kW]	m [kg]
208V 3~, 60Hz, cURus Motor						
EWA 56.9003	900	8000	2,9	4,00	1,22	44
EWA 56.9203	1200	10600	2,9	4,80	1,56	46,6
EWA 56.9205	1200	10600	5,8	8,15	2,58	48,4
480V 3~, 60Hz, cURus Motor						
EWA 56.9003	900	8000	2,9	2,40	1,30	44
EWA 56.9203	1200	10600	2,9	2,80	1,51	46,6
EWA 56.9205	1200	10600	5,8	4,50	2,77	48,4
EWA 56.9503	1500	13300	2,9	3,10	1,80	46,6
EWA 56.9505	1500	13300	5,8	5,10	3,31	48,4



Always support, always nearby

Working with Lock means choosing reliability and simplicity. We support you in every project – from initial design to on-site service. Our technology is designed to operate for many years without problems. And if something does need to be replaced or adjusted, we are ready to help.

Maintenance

Our drives are completely maintenance-free. Any maintenance only concerns system components such as racks or bearings. Thanks to high-quality sealing and electrical engineering, the motor itself requires no maintenance.

Installation and adjustment

Thanks to the mechatronic LSC 40 limit switch, you can set end positions easily. No power supply, no wear. Two clicks and the system is ready for operation. Adjustments later on are also easy via Plug & Play.

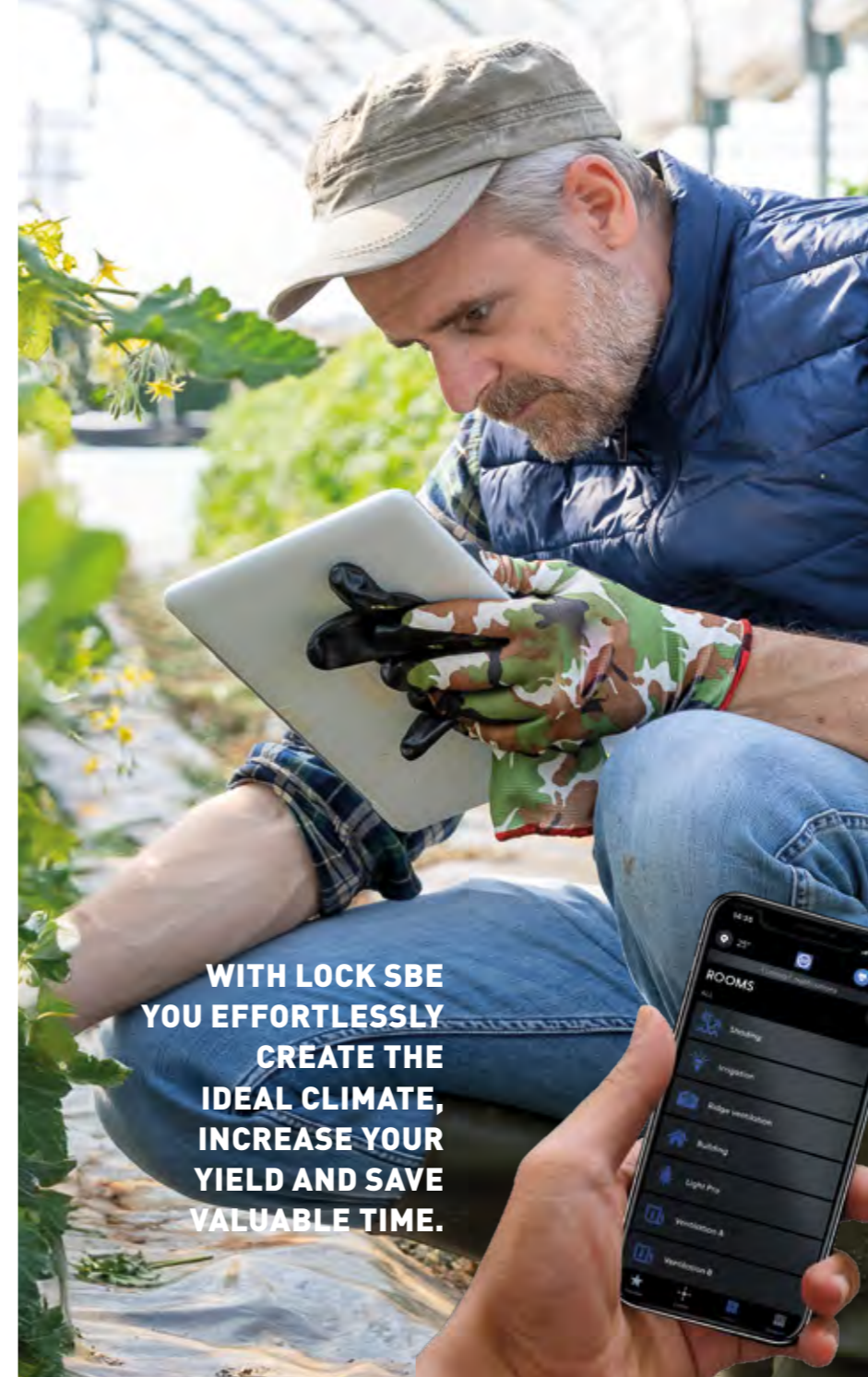
Personal support

Our specialists think along with you – during the design phase, during installation or when you have maintenance questions. You always have direct contact with someone who understands your project.

**CAN WE HELP YOU WITH
YOUR PROJECT?**

Get in touch with us

+49 7371 9508-0
engineering@lockdrives.com



**WITH LOCK SBE
YOU EFFORTLESSLY
CREATE THE
IDEAL CLIMATE,
INCREASE YOUR
YIELD AND SAVE
VALUABLE TIME.**

SBE THE SMART SYSTEM FOR HORTICULTURE

By Lock SmartSolutions

Lock stands for innovative premium solutions and is the competence platform that leads horticulture into the future. With the smart LOCK SBE system, you automate work processes to the maximum and easily manage climate and conditions - anytime, anywhere via smartphone or tablet.

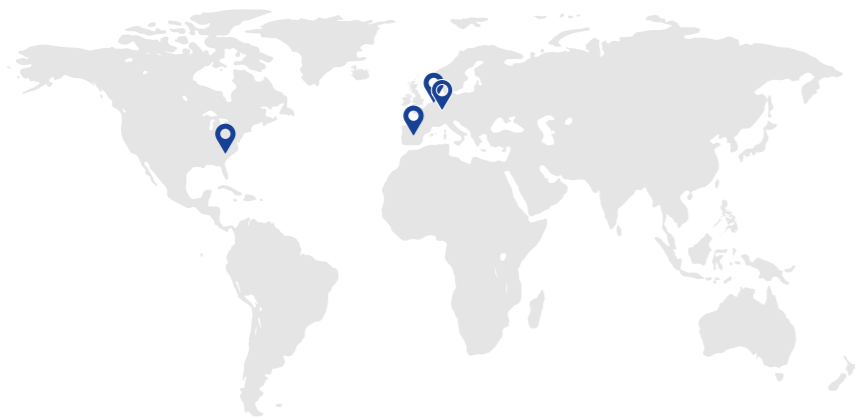
The result: always optimal climate conditions benefiting people, animals, plants and yield. Thanks to intelligent ventilation, sensor technology and continuous interaction between experts and science, you create a stable, pleasant and productive environment in every season.

LOCK SBE
innovation, convenience and
growth in one

For more information on SBE
visit: locksmartsolutions.com

The 5 promises of Lock

- 1 More than 180 years of experience in drive technology
- 2 Solid German engineering
- 3 Easy does it
- 4 Fits any design
- 5 Personal and nearby



GLOBAL OFFICES

Lock GmbH - Germany
Lock Drives B.V. - Netherlands

Lock Drives - Spain
Lock Drives Inc. - USA



CUSTOMER SATISFACTION IS OUR CENTRAL KEY INDICATOR. WE WERE ABLE TO IMPROVE THIS LAST YEAR TO 96.5 %. PLEASE CONTINUE TO SUPPORT US BY LETTING US KNOW YOUR HONEST AND CONSTRUCTIVE OPINION.

SIMONE OTT, CUSTOMER MANAGEMENT



LOCK GMBH
MAIN OFFICE // ERTINGEN // GERMANY



**SMART DRIVE
TECHNOLOGY FOR
GREENHOUSE
HORTICULTURE.**

05/2026